



INNOVATIVE: Journal Of Social Science Research

Volume 4 Nomor 4 Tahun 2024 Page 7898-7907

E-ISSN 2807-4238 and P-ISSN 2807-4246

Website: <https://j-innovative.org/index.php/Innovative>

## Village Asset-Based Empowerment: Efforts to Open Employment Opportunities for Ketapanrame Village Community, Trawas Sub-district, Mojokerto Regency

Muhammad Ulul Azmi<sup>1</sup>, Nur Laili Mufadhilah<sup>2</sup>, Meilana Tasya<sup>3</sup>, Sri Umiyati<sup>4✉</sup>

Hang Tuah University Surabaya

Email: [sri.umiyati@hangtuah.ac.id](mailto:sri.umiyati@hangtuah.ac.id)<sup>4✉</sup>

### Abstrak

Penelitian ini bertujuan untuk merumuskan model pengelolaan aset desa yang optimal yang berorientasi pada pembukaan lapangan kerja bagi masyarakat pedesaan dan peningkatan pendapatan desa. Besar kecilnya anggaran desa idealnya berdampak pada perekonomian masyarakat desa, namun hal tersebut belum tentu terwujud karena beberapa faktor internal dan eksternal pemerintah desa. Meningkatnya jumlah aset yang dikelola pemerintah desa akibat peningkatan anggaran desa memerlukan pengelolaan yang baik. "Baik" dalam arti memberikan dampak terhadap perekonomian masyarakat dan memberikan kontribusi pendapatan bagi pemerintah desa. Penelitian ini menggunakan pendekatan deskriptif kualitatif, yaitu suatu metode penelitian yang bertujuan untuk memberikan gambaran objektif mengenai realitas objektif yang terjadi pada suatu kondisi atau lingkungan. Penelitian ini mendeskripsikan pemanfaatan aset pemerintah desa yang berpotensi menciptakan lapangan kerja bagi masyarakat. Metode pengumpulan data meliputi observasi, wawancara mendalam, diskusi terfokus, studi literatur dan dokumentasi. Penelitian dilakukan di Desa Ketapangrame, Kecamatan Trawas, Kabupaten Mojokerto, Jawa Timur. Informan berasal dari perangkat desa yang mempunyai fungsi pengelolaan aset desa, pengurus Badan Usaha Milik Desa (BUMDES) dan komponen masyarakat desa.

Kata Kunci: *Pemerintah, Aset Desa, Pemanfaatan Pemberdayaan*

## Abstract

This research aims to formulate an optimal model of village asset management that is oriented towards opening employment opportunities for rural communities and increasing village income. The size of the village budget should ideally have an impact on the economy of the village community, but this may not be realized due to several factors internal and external to the village government. The increase in the number of assets managed by the village government due to the increase in the village budget requires good management. "Good" in the sense of having an impact on the community's economy and contributing revenue to the village government. This research uses a descriptive qualitative approach, which is a research method with the aim of providing an objective description of the objective reality that occurs in a condition or environment. This research describes the utilization of village government assets to potentially create jobs for the community. Data collection methods include observation, in-depth interviews, focused discussions, literature study and documentation. The research was conducted in Ketapangrame village, Trawas District, Mojokerto Regency, East Java. Informants come from village officials who have the function of managing village assets, administrators of Village-Owned Enterprises (BUMDES) and components of the village community.

Keywords: *Government, Village Assets, Empowerment Utilization*

## INTRODUCTION

Since the Village Law No. 06/2014 came into effect, the village has a new face where the village through the village government can manage its wealth independently according to the needs of the community. the wealth contained in the village can be in the form of physical (hard) and non-physical (Soft). agricultural land, village treasury land, natural tourism potential (some villages mention it differently), village roads, village offices, village meeting halls are some examples of village wealth in physical form. While some examples of non-physical village wealth can be in the form of local artistic traditions, religious ceremonies, local culture, or it can also be in the form of mythological stories that live in the traditions of the village community which are then transformed into local wisdom of the community (Rosdah & Yoserizal, 2017).

Wealth owned by the village is managed by the village government or by a local entity that has been recognised and approved by the local community. 'Village wealth' can also be termed as village assets. Physical wealth is equivalent to tangible assets while non-physical wealth is equivalent to intangible assets (Karma et al., 2018). Village assets should be used for the benefit of rural communities. Agricultural land is used by farmers to support agricultural activities, as well as access roads for smallholder plantations used to support plantation activities, as well as several other types of assets used for the benefit of the

community. The assets owned by the village government are ultimately intended to improve the welfare of the village community (Endriana et al., 2022)

The management of village assets is not only about conducting inventories with the aim of securing assets, but also optimising the use of assets so that every asset owned by the village government can provide economic benefits for the village government (Village Original Income) and for the community in the form of increased purchasing power (Marshaliany, 2019). The results of village funds transferred from the central government can have an economic impact on rural communities in Indonesia. Of course, to utilize village assets optimally requires village officials who understand how to utilize assets that can have an economic impact on the community and village government. The ability to identify functional village assets cannot be operated normally and functional assets can still be used but the maintenance costs are quite large, if not used optimally it will absorb quite a large maintenance budget. This is a basic capability required for village officials to manage village assets optimally (Firmansyah, 2018).

Asset-based empowerment of village communities is not a new way of improving the community's economic capacity. According to Hadi, in the publication of his research findings, an approach to improving the welfare of a community describes two ways of overcoming poverty (Raharjo, 2021). In the first approach, there is more emphasis on the condition of the community which is completely deprived with several economic problems, giving rise to a "negative" impression, while the second approach places more emphasis on the potential that already exists in the community so that the existing potential becomes the initial resource in empowering the community in the context of society. village (Kristanto & Putri, 2021) .

The mentoring factor is one of the factors that determines the success of empowerment efforts (Hidayat & Nursetiawan, 2022), besides several other factors. Intensive mentoring is required which is carried out by formal or informal institutions through providing motivation, hard skills, knowledge, building group collaboration for the common good which are efforts that can be made to realize the goal of empowerment (Astawa et al., 2022). In Government Regulation Number 71 of 2010 concerning Government Accounting Standards, assets are defined as: "economic resources controlled and/or owned by the government as a result of past events and from which future economic and/or social benefits are expected to be obtained, either by government and society, and can be measured in units of money, including non-financial resources needed to provide services to the general public and resources maintained for historical and cultural reasons." (Habib, 2021)

Meanwhile, the definition of assets according to (Indonesai, 2014) Minister of Home Affairs Regulation no. 01 of 2016 as follows: "Village assets are goods belonging to the Village which originate from the original assets belonging to the Village, purchased or obtained at the expense of the Village Revenue and Expenditure Budget (APB Village) or the acquisition of other legal rights (Maghfiroh et al., 2021). Obtaining other rights can be in the form of grants given from other parties in the form of assets used by the village government to support the administration of the village government." (Wahyuningsih & Djuwita, 2022).

## RESEARCH METHOD

Qualitative descriptive research methods are used to solve a problem and offer solutions to the problem. This research describes the problem of unemployment in rural areas and provides a solution through the use of village assets as an effort to reduce unemployment rates in rural areas. This is in line with what has been stated by Kirk and Miller in Armaidly Armawi (Armaidly, 2015) that qualitative research is "a particular tradition in social science which fundamentally relies on observing humans in their own area and connecting with these people. in language and terminology.

This research will provide a model for utilizing village assets that can create jobs for rural communities while increasing the village's original income. This research will be conducted in Ketapangrame Village, which is one of the developing villages in Trawas sub-district, Mojokerto district, East Java Province. The stages of activities carried out in this research were the initial stage of conducting a field study in the village where the research was conducted. Interview with several village officials who have village asset management functions. Apart from conducting interviews, this research will also analyze asset inventory data with the aim of obtaining information about assets owned by the village government but which do not function optimally in the context of implementing village government. Based on the available data, analysis is then carried out to produce an asset management model that can encourage job creation for village communities.

The qualitative approach obtains an understanding of the problems faced through collecting field data where the informants live (Creswell, 2015). The informants come from elements of the village apparatus, namely the General Affairs Council, which has the main task of managing village assets. The Head of Financial Affairs is in charge of managing finances and the Secretary of Village-Owned Enterprises. Each informant came from Ketapangrame village. To obtain information, each informant was interviewed using notes

containing the points to be asked. Interviews use a recorder so that all information is recorded.

Apart from the interview method, the observation method is applied to observe the village asset management patterns implemented by each village as well as looking for documents that will strengthen the research results. When carrying out field visits, pictures of several village asset spots are taken as visualization material in the research report. This process is usually called the documentation method. To confirm the correctness of the data obtained, the data triangulation technique was used by cross-checking the data obtained from each data source (Mungin, 2015), the results will become a basis for developing a village asset-based empowerment model.

## RESULT AND DISCUSSION

Ketapanrame is a village in the Trawas District, Mojokerto Regency, Ketapanrame Village consists of 3 hamlets, namely Ketapanrame Hamlet, Sukorame Hamlet, Slepri Hamlet, the distance between the three is not far, and the center of government is in Ketapanrame Village, the condition of the land in Ketapanrame Village is very fertile and It is very suitable for planting vegetables, fruit and all kinds of other plants because Ketapanrame village is located in a mountainous area. Ketapanrame village is geographically located at an altitude of 700-1200m above sea level and below the slopes of Mount Welirang, the slope of Ketapanrame village is 35 ° degrees. Rainfall in Ketapanrame village is 2,708 and the average air temperature is 18-21 °C. Ketapanrame village is located between two mountains, namely Mount Penanggungan and Welirang. Ketapanrame village has natural and cultural riches that are original and preserved. Some of the tourist attractions in Ketapanrame village are the Dlundung waterfall tourist area which is at the very end of Ketapanrame village and enters the forestry land area. On every holiday it will be very busy with visitors from outside the city and locally.

### *Ketapanrame Village Asset Profile*

The village mobile asset profile table provides information about the asset resources owned by the Ketapanrame village government that have been used for government administration and services to the community. The source of financing for all village assets is obtained using a budget originating from the Village Revenue and Expenditure Budget. Village assets are managed in accordance with the provisions of applicable laws and regulations. Village asset regulations are regulated in Minister of Home Affairs Regulation no. 01 of 2016 concerning Village Asset Management. Contains formal rules that regulate

the technical management of village assets and at the same time serves as a reference for asset management apparatus to manage and account for village assets to the village head as the holder of power over village assets.

Asset management is a series of activities starting from planning, procurement, use, utilization, security, maintenance, deletion, transfer, administration, reporting, assessment, guidance, supervision and control of Village assets. The following is the scope of village original wealth which is regulated in the village asset management regulations.

Table 1. Scope of Village Original Wealth

---

The scope of the village's original wealth

---

Ground the village treasury

Village buildings (village hall, polindes, etc.)

Village infrastructure (village roads, bridges, irrigation channels,

Natural assets (village forests, water sources)

Village market or village kiosk

Village office equipment and supplies

Other original village assets

---

Utilization of Village Assets is the utilization of Village assets indirectly for the purpose of carrying out village government tasks and does not change ownership status. The utilization scheme can be described as follows:

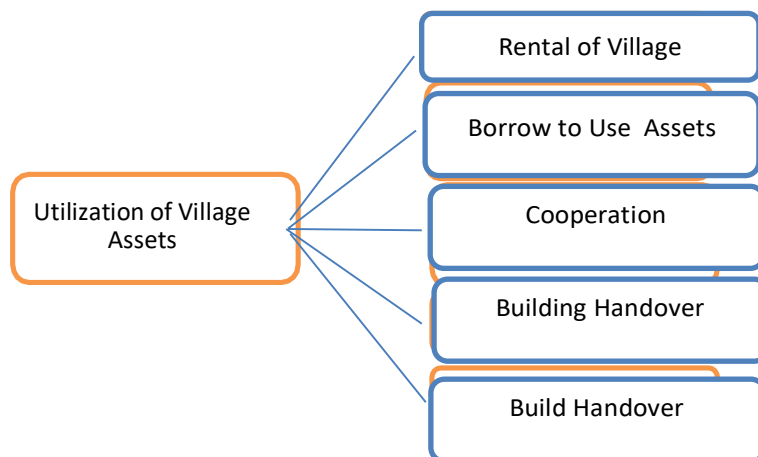


Figure 1. Classification of Village Asset Utilization

Village asset management within the scope of the village government is managed in stages starting from the village head as the Village Asset Management Authority Holder (PKPADes). The Village Secretary acts as Village Asset Management Assistant (PPADes). The final level of village asset management is that the Head of General Affairs acts as

administrator of village assets. The village asset management structure is depicted in accordance with the structure chart below:

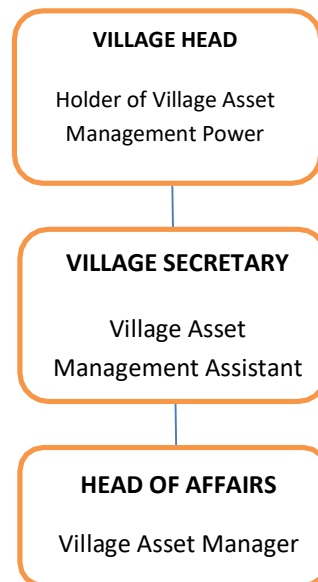


Figure 2. Village Asset Management Structure

In accordance with (Indonesai, 2014) the definition of village based on Law Number 06 of 2014 concerning Villages is as follows: "Villages are villages and traditional villages or what are called by other names, hereinafter referred to as Villages, are legal community units that have territorial boundaries that are authorized to regulate and administer government affairs, the interests of local communities based on community initiatives, rights of origin, and/or traditional rights recognized and respected in the government system of the Unitary State of the Republic of Indonesia"

It is clear that the village defined and expressed in the law has an orientation towards safeguarding community interests initiated by the community itself. Managing community service matters and creating community independence is part of the government's main tasks. Villages, with all their potential, will strive to bring economic prosperity to the community by optimizing the management of their potential. Even though the conditions and potential of villages sometimes have similarities with other villages, what is clearly visible is the difference in the dimensions of the community. The following is a classification of villages from the perspective of community development. Villages consist of several types, namely,

1. Traditional village (Pradesa)

Characteristic of traditional villages, community dependence on natural resources is still very high to meet daily needs. Belief in mystical powers is still well maintained as

a consequence of dependence on nature. Tends to reject technological developments and still uses traditional equipment left by their ancestors.

## 2. Self-Help Village

The people live independently and are no longer completely dependent on natural resources. Community social interactions are going well with emotional ties, although interaction with communities outside the village is still very limited

## 3. DIY Village

Communities living in independent villages are more open to people outside the village, thereby allowing the entry of information and knowledge that has an impact on village development by adopting production methods to meet the living needs of local village communities. If there is excess production, it will be sold or exchanged for other goods from other villages.

## 4. Self-Sufficiency Village

Even more advanced than self-sufficient villages, self-sufficient villages are familiar with more modern production patterns and utilize all the village's economic potential to improve the economy of rural communities.

The birth of Law no. 06 of 2014 concerning Villages is a legal instrument for advancing villages because through this law the village government obtains village funds originating from the State Revenue and Expenditure Budget in addition to income originating from Provincial Assistance, revenue sharing from regional taxes and levies from the district and Village Fund Allocations from the district and city and village original income. Sources of revenue obtained by the village government can be a stimulus for the village to raise its status from a traditional village (economic indicators) to a self-supporting village, from previously a self-supporting village to a self-sufficient village, from a self-sufficient village to a self-sufficient village. This change in status is in line with the spirit of the village law.

## CONCLUSION

Empowering village communities through the use of village assets requires innovative thinking from all parties, especially the village government as the holder of authority over village asset management. Village treasury land owned by the village government provides optimal results, both for the government and the village community. So the existence of assets that can be utilized optimally becomes a very important existence for village communities. For the village government, the use of village assets is very important, therefore the village government learns a lot from other villages that have higher progress than Ketapanrame village, as a lesson to fulfill the wishes of the

village and the village government. Village-Owned Enterprises (BUMDES) are village business units that play a role in encouraging increased economic activity in rural communities. Optimizing the use of village treasury land can be completely handed over to BUMDES so that the results of its use can be felt by rural communities.

#### REFERENCES

- Astawa, I. P. M., Pugra, I. W., & Suardani, M. (2022). Empowering the Elderly Community with an Asset Based Community Development (ABCD) Approach in Kawan Hamlet, Bakas Village, Klungkung Regency. *Bhakti Persada Journal of Science and Technology Applications*, 8(2), 108–116.
- Endriana, F., Alnauri, S. C., & Agustin, D. A. (2022). Analysis of the Influence of Cultural Tourism on the Preservation of the Osing Tribe in the Kemiren Tourism Village. *JOURNAL OF TOURISM AND HOSPITALITY BUSINESS STUDIES*, 3(2), 88–95.
- Firmansyah, A. (2018). Village Asset Management in Tangerang Regency. *Scientific Journal of Unitary Accounting*, 6(1), 1–8.
- Habib, M. A. F. (2021). Theoretical study of community empowerment and creative economy. *Ar Rehla: Journal of Islamic Tourism, Halal Food, Islamic Traveling, and Creative Economy*, 1(2), 82–110.
- Hidayat, R., & Nursetiawan, I. (2022). Village Asset Management Strategy Based on the "SIPADES" Village Asset Management System Application in Karangjaladri Village, Parigi District, Pangandaran Regency. *MODERATE: Scientific Journal of Government Science*, 8(2), 317–328.
- Karma, R., Wahyuni, S., & Muhlis, M. (2018). KKN-PPM Community Empowerment in Wecudai Village, Pammana District, Wajo Regency as a Cultural Tourism Pilot Village through Development of Literature Based on Local Wisdom. *Amaliah: Journal of Community Service*, 2(2), 230–236.
- Kristanto, T. B. A., & Putri, A. A. (2021). Asset-based community development as an effort to empower society through the fitness tourism sector in Indonesia. *Journal of Social Development Studies*, 2(2), 43–54.
- Maghfiroh, A. P., Yudha, A. T. R. C., Pradessari, A., & Astuti, S. A. D. (2021). Economic Independence of Village Communities Based on Productive Asset Utilization in Mojokerto Regency. *HORIZON*, 15(2), 139–152.
- Marshalliany, E. F. (2019). Management of Village Assets by the Village Government in the Main Village, Cijeungjing District, Ciamis Regency. *Dynamics: Scientific Journal of Public Administration*, 6(1), 15–26.

- Raharjo, M. M. (2021). Management of village finances and village assets. *Literary Earth*.
- Rosdah, A., & Yoserizal, Y. (2017). Local Wisdom of the Sialang Jaya Village Community in the Lubuk Larangan Tradition in Rambah District, Rokan Hulu Regency.
- Wahyuningsih, N., & Djuwita, D. (2022). Community Empowerment to Support the Development of Padabeunghar Village into a Tourism Support Village. *Dimasejati: Journal of Community Service*, 4(1), 74–93.